

## 2017-05-12\_09-48-09-LM-Report-SONAPHONE Test1

2017-05-12

<b>Author</b>	<b>ST</b>
<b>Sonaphone III (10116)</b>	
<b>Sensors</b>	<b>BS 10</b>
<b>App</b>	<b>LevelMeter 1.0.0</b>

---

<b>Folder Name</b>	SONAPHONE Test1
<b>Number of Measurements</b>	7
<b>Leaks</b>	2
<b>Others</b>	5
<b>First Measurement</b>	2017-04-27
<b>Meas. Details</b>	2017-05-02

2017-04-27 ( 00:00:10.000 )

Leak

Tester SONAPHONE User

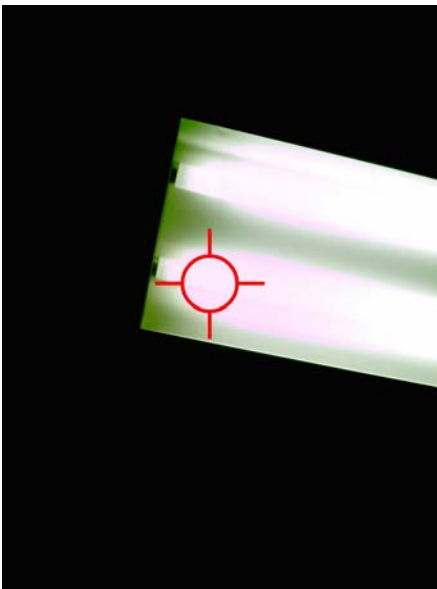
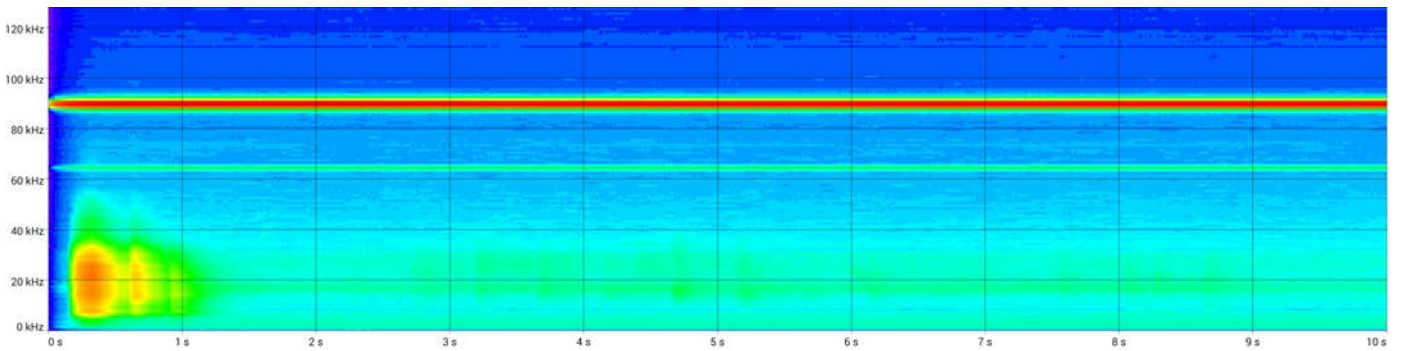
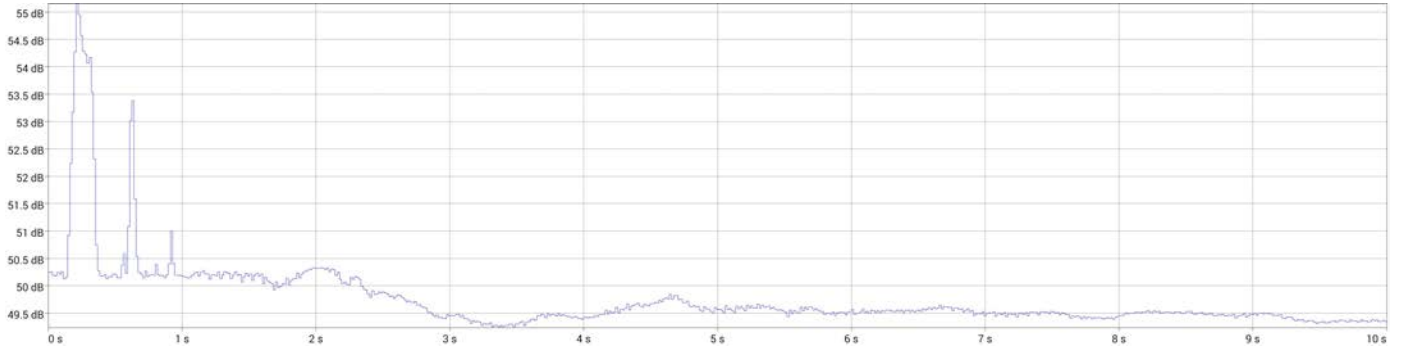
$L_{min}$  49 dB  $L_{max}$  55 dB

Sensor BS 10 (10091)

$L_{eq}$  50 dB  $L_{pk}$  67 dB

2017-04-27

Fluorescent lamp



2017-04-27

2017-04-27 ( 00:00:10.000 )

Leak

Tester SONAPHONE User

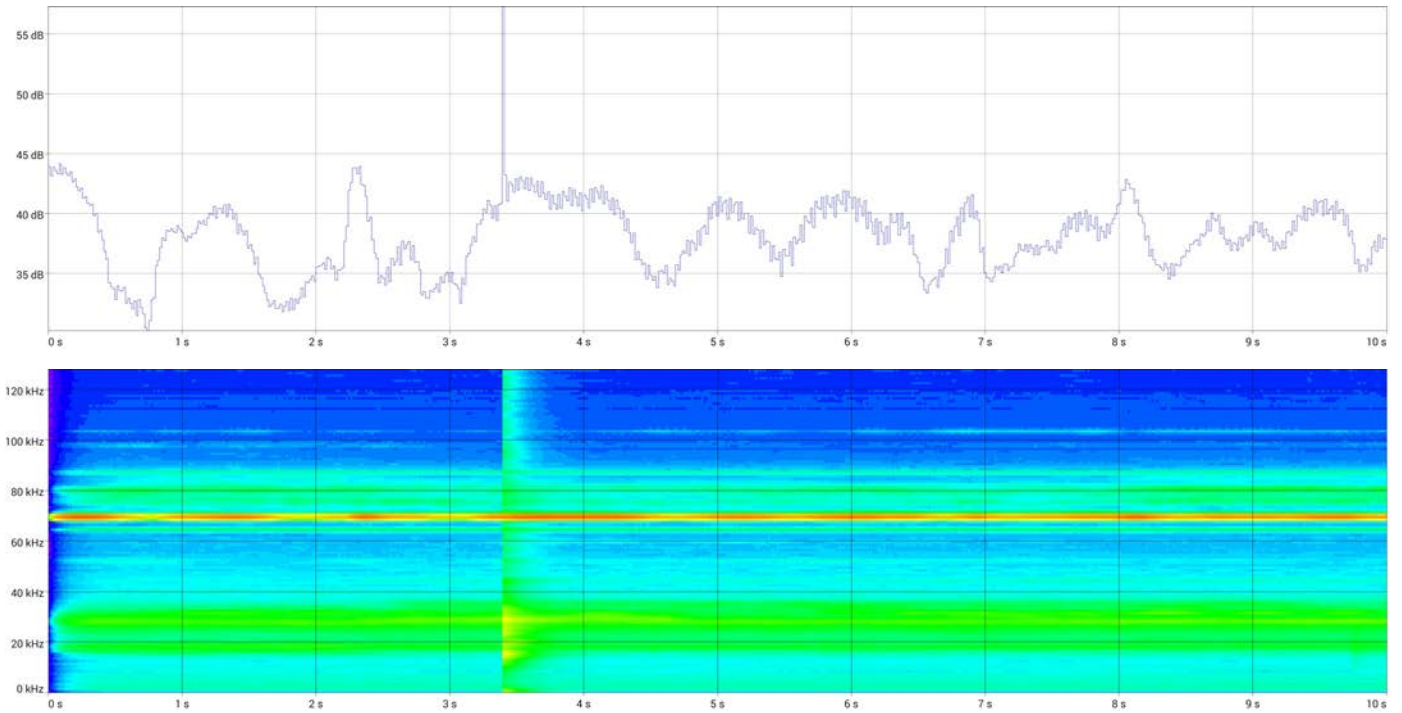
$L_{min}$  30 dB  $L_{max}$  57 dB

Sensor BS 10 (10091)

$L_{eq}$  39 dB  $L_{pk}$  75 dB

2017-04-27 alpha NX main

2017-04-27 Water heater



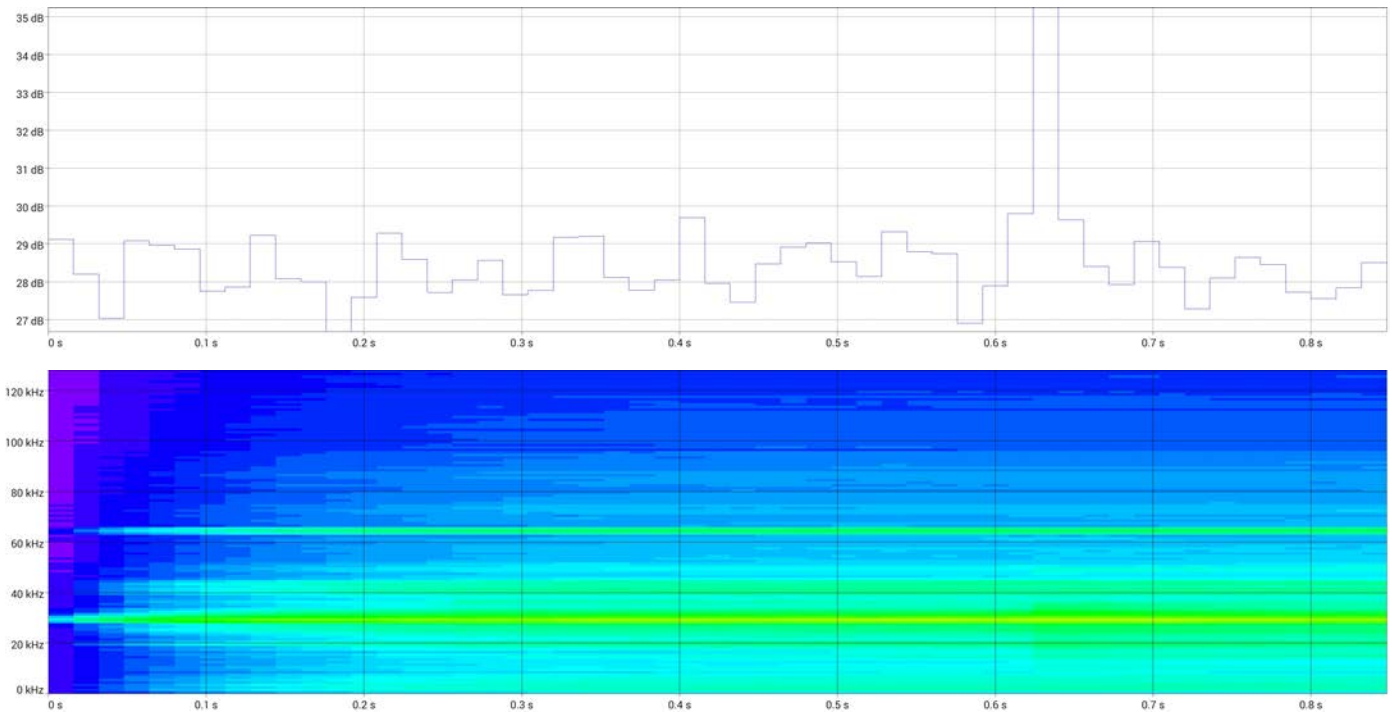
2017-04-27

Tester SONAPHONE User

$L_{min}$  27 dB  $L_{max}$  35 dB

Sensor BS 10 (10091)

$L_{eq}$  29 dB  $L_{pk}$  52 dB

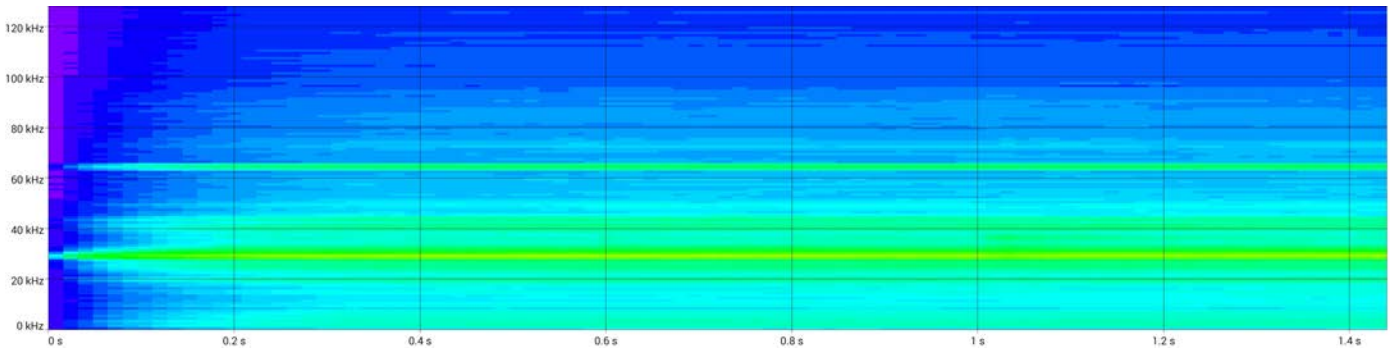
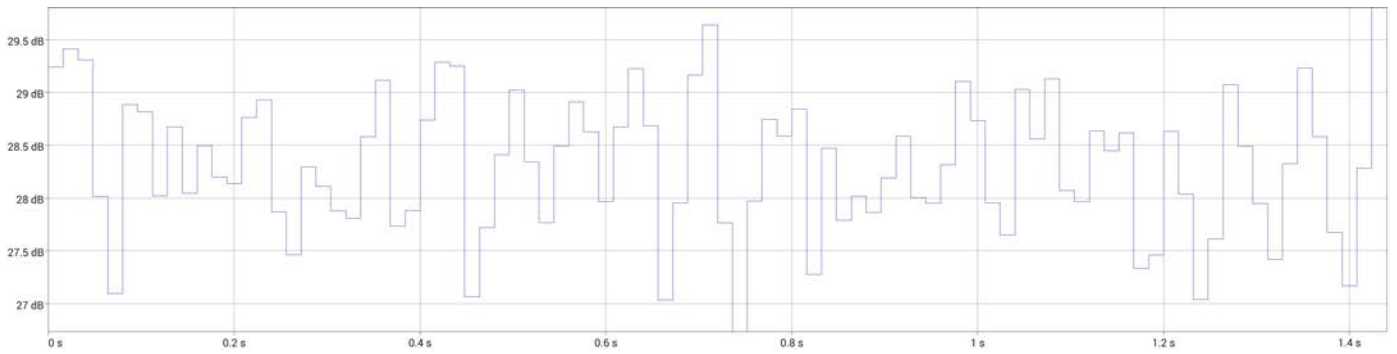


**Tester** SONAPHONE User

**L<sub>min</sub>** 27 dB **L<sub>max</sub>** 30 dB

**Sensor** BS 10 (10091)

**L<sub>eq</sub>** 28 dB **L<sub>pk</sub>** 42 dB



2017-05-01 ( 00:00:10.000 )

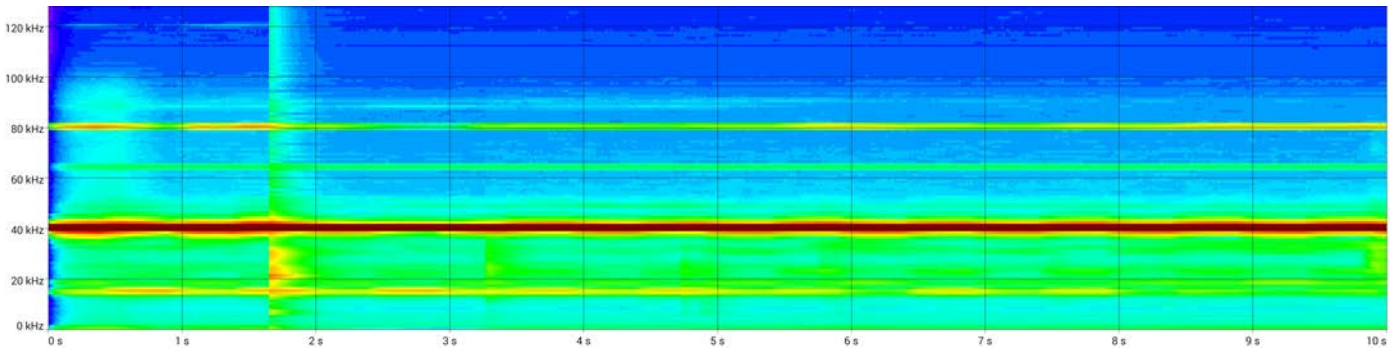
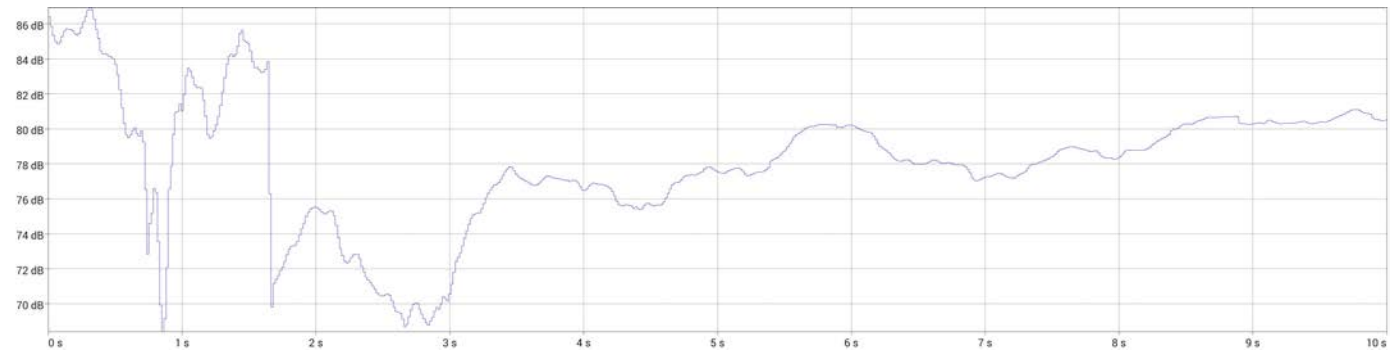
No Application

Tester ST

$L_{min}$  68 dB  $L_{max}$  87 dB

Sensor BS 10 (10091)

$L_{eq}$  80 dB  $L_{pk}$  91 dB



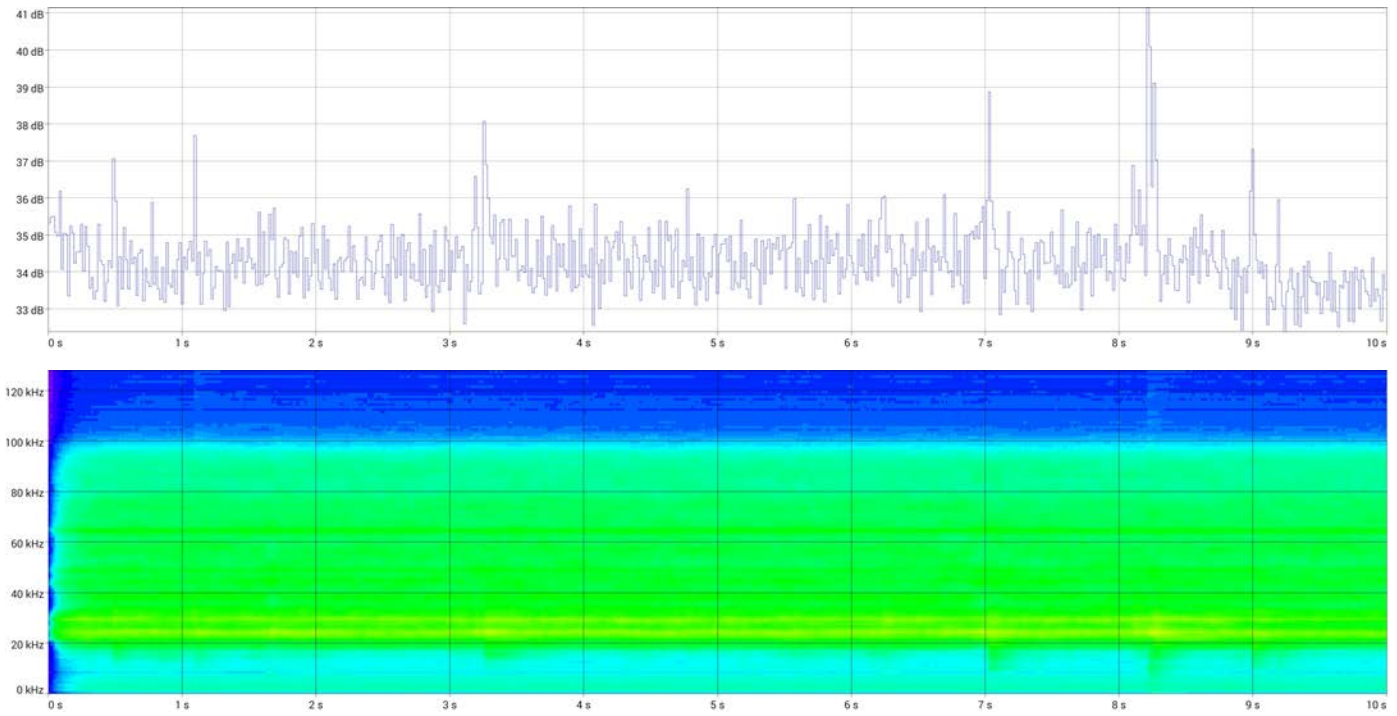
2017-05-01

Tester ST

$L_{min}$  32 dB  $L_{max}$  41 dB

Sensor BS 10 (10091)

$L_{eq}$  34 dB  $L_{pk}$  58 dB





Tester ST

$L_{min}$  33 dB  $L_{max}$  39 dB

Sensor BS 10 (10091)

$L_{eq}$  34 dB  $L_{pk}$  55 dB

