

How do you choose the UM06 or UM08?



MicroLinks Technology Corp.
2016 Seminar

Outline

- UM06 with HDMI and USB interface
 - Directly connect to PC is the major advantage.
 - HDMI interface offers the other optional choice, simple connection to Monitor.
 - Add the side light , GN-01 is necessary.

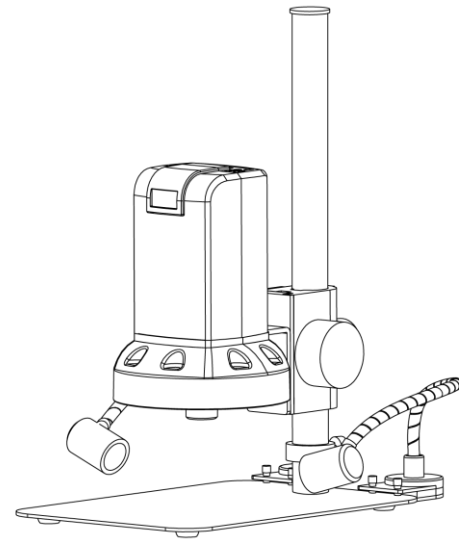
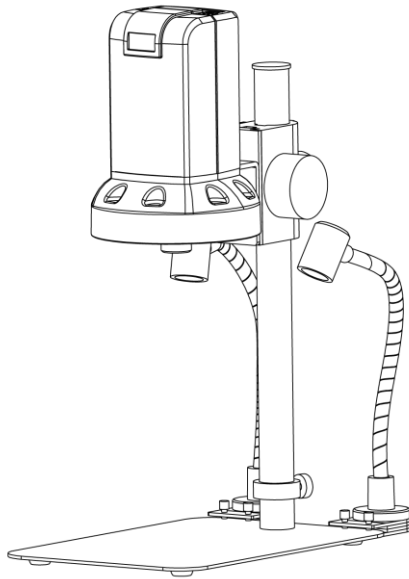
- UM08 with HDMI interface
 - Directly connect to monitor is the major advantage.
 - Auto focus by the device itself.

Set up the right position of side light

No dark block under the lens

□ Long WD , low Mag.

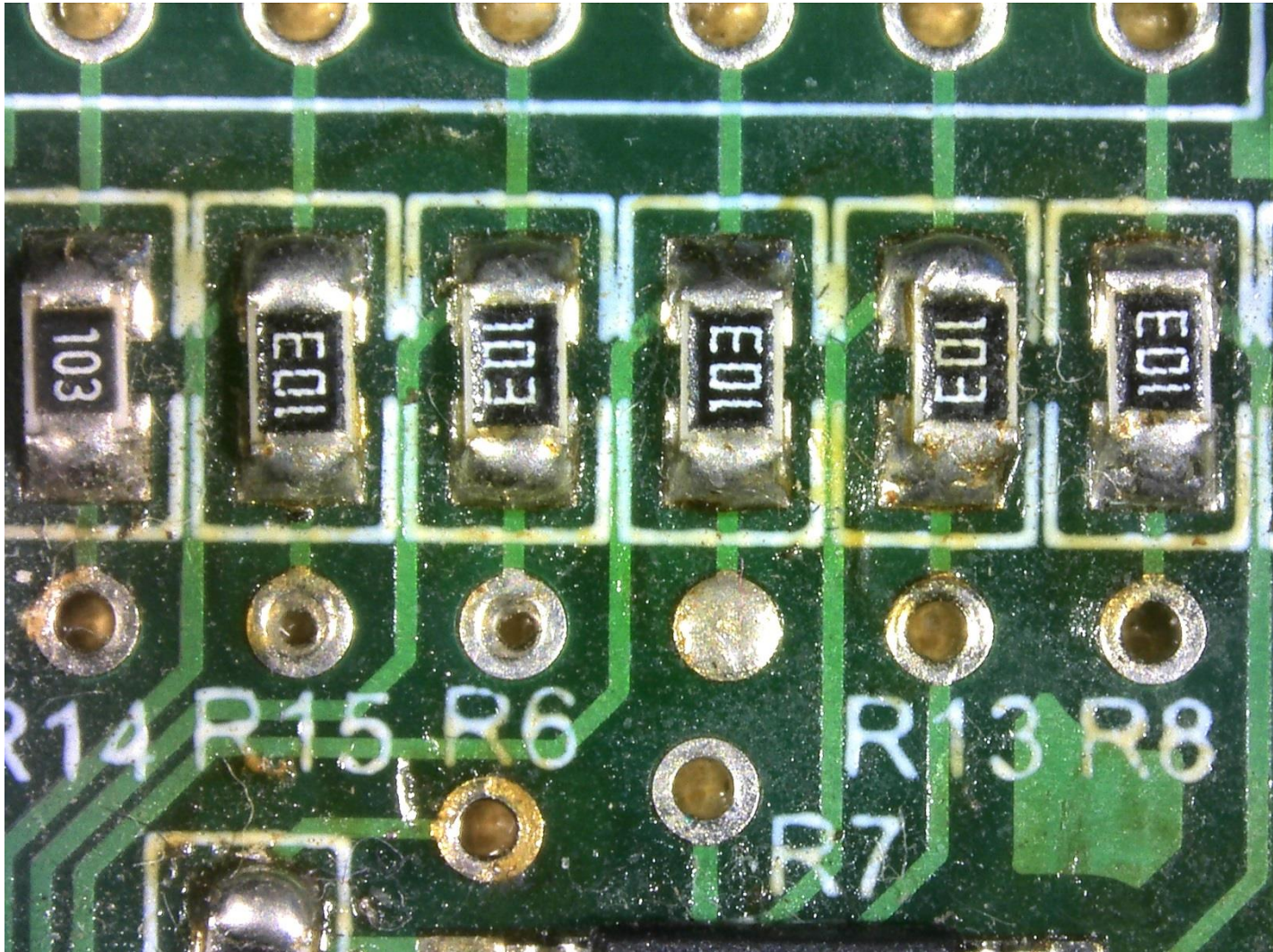
□ Short WD, high Mag.



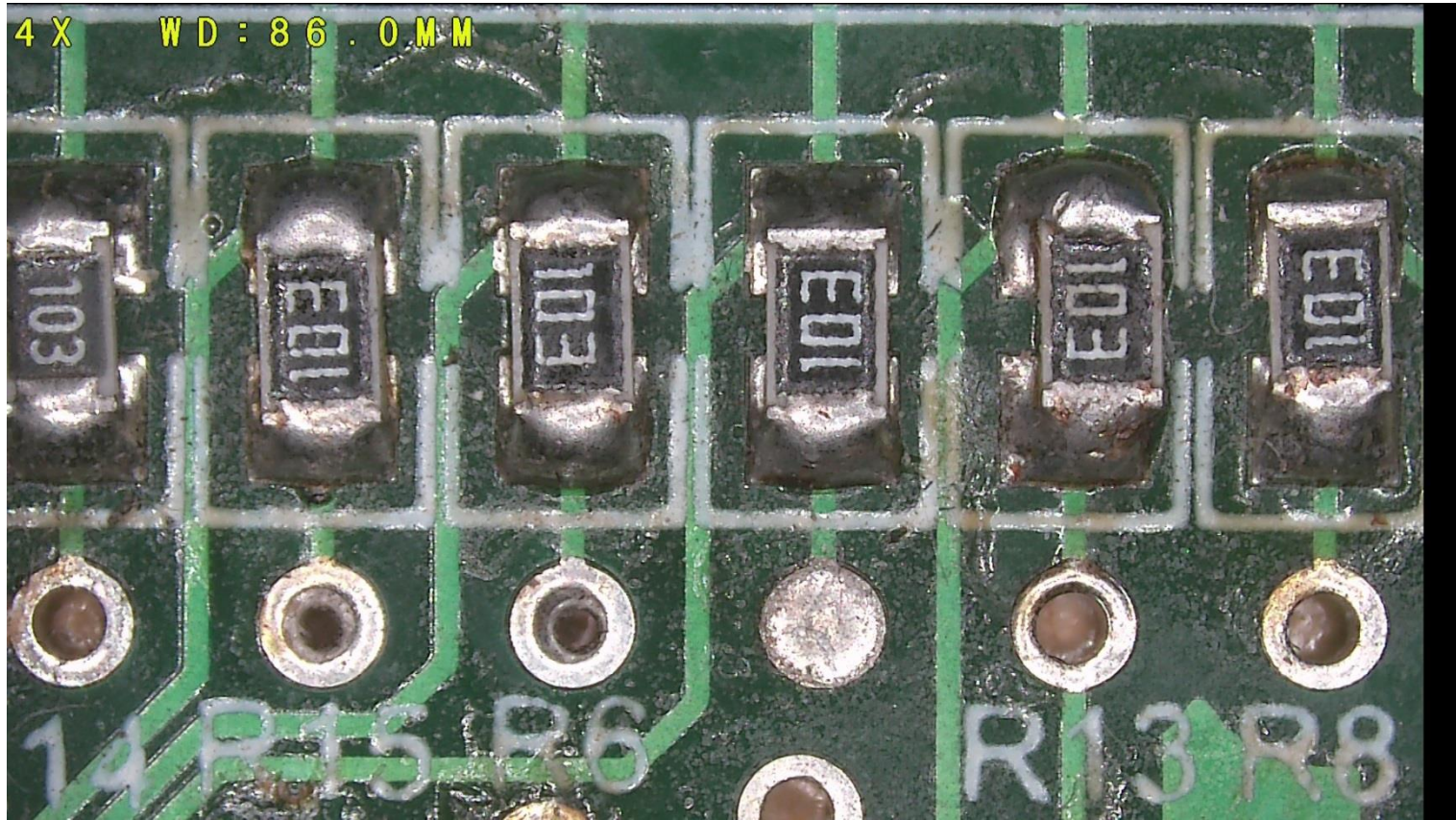
HDMI v.s. PC mode



Application : PCB ▣ UM06 + GN-01



Application : PCB ▣ UM08



Application : Tea ▣ UM06 + GN-01



Application : Tea ▣ UM08



Application : Black tea ▣ UM06 + GN-01



Application : Black tea ▣ UM08



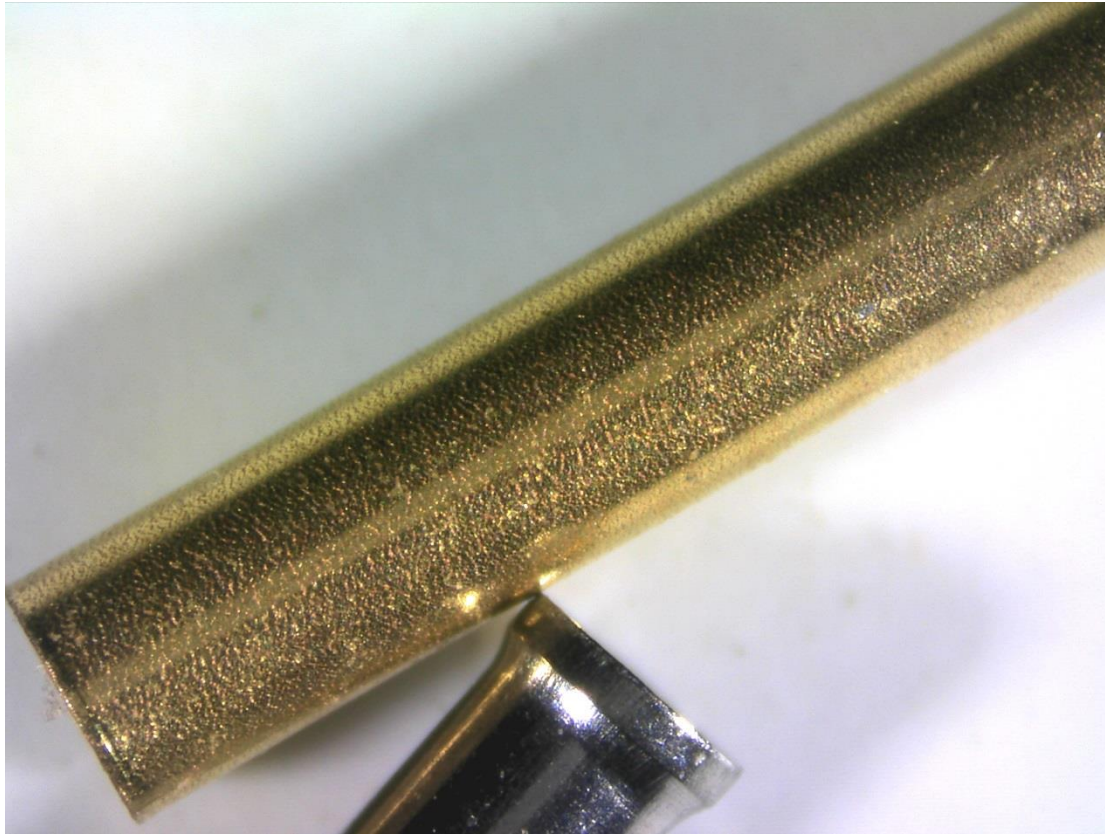
Application: Precision parts ▣ UM06 + GN-01



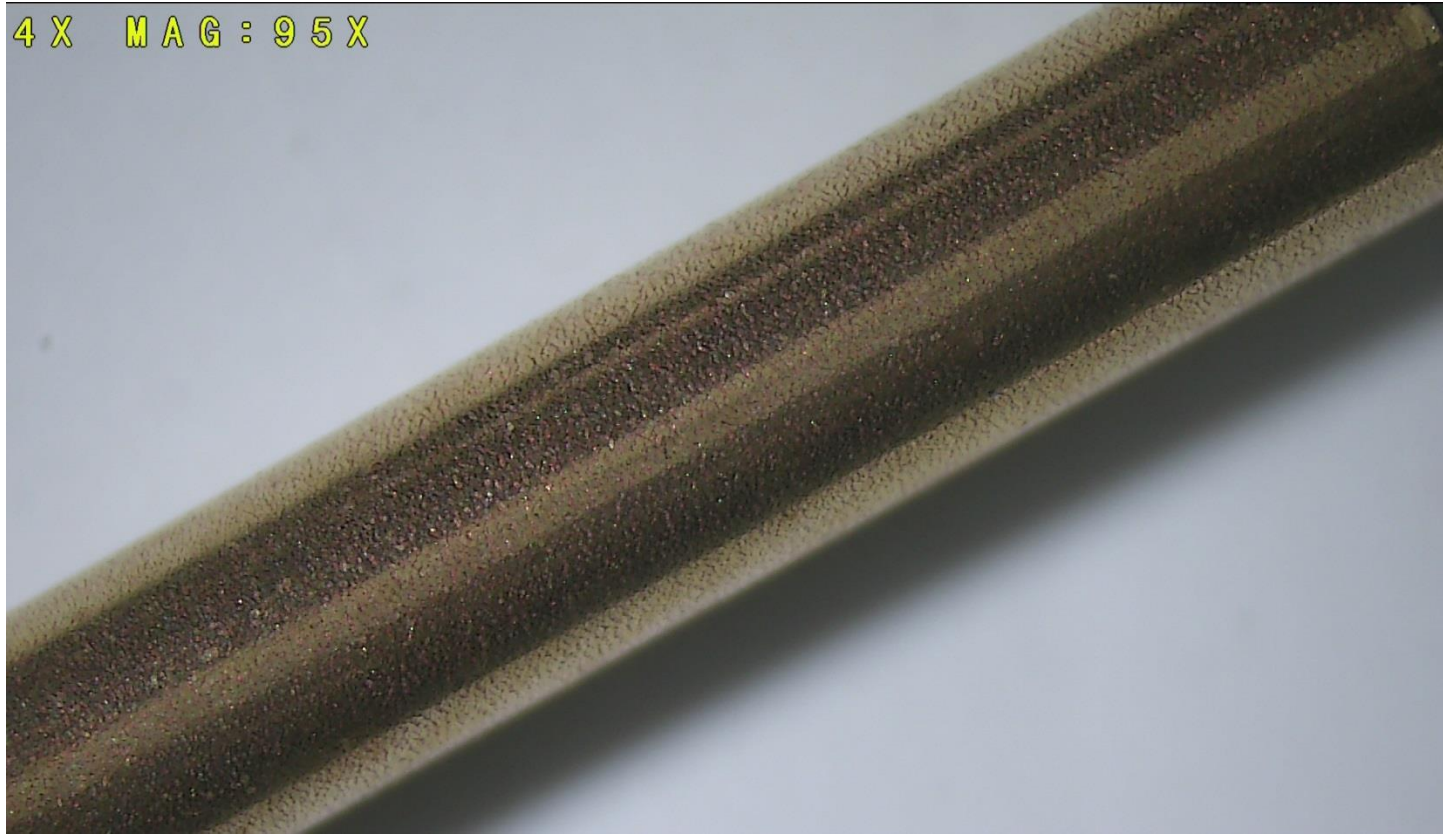
Application : Precision parts □ UM08



Application : Precision parts ▣ UM06 + GN-01



Application : Precision parts □ UM08



Application : Sugar

□ UM06 + GN-01



Application : Sugar

□ UM08

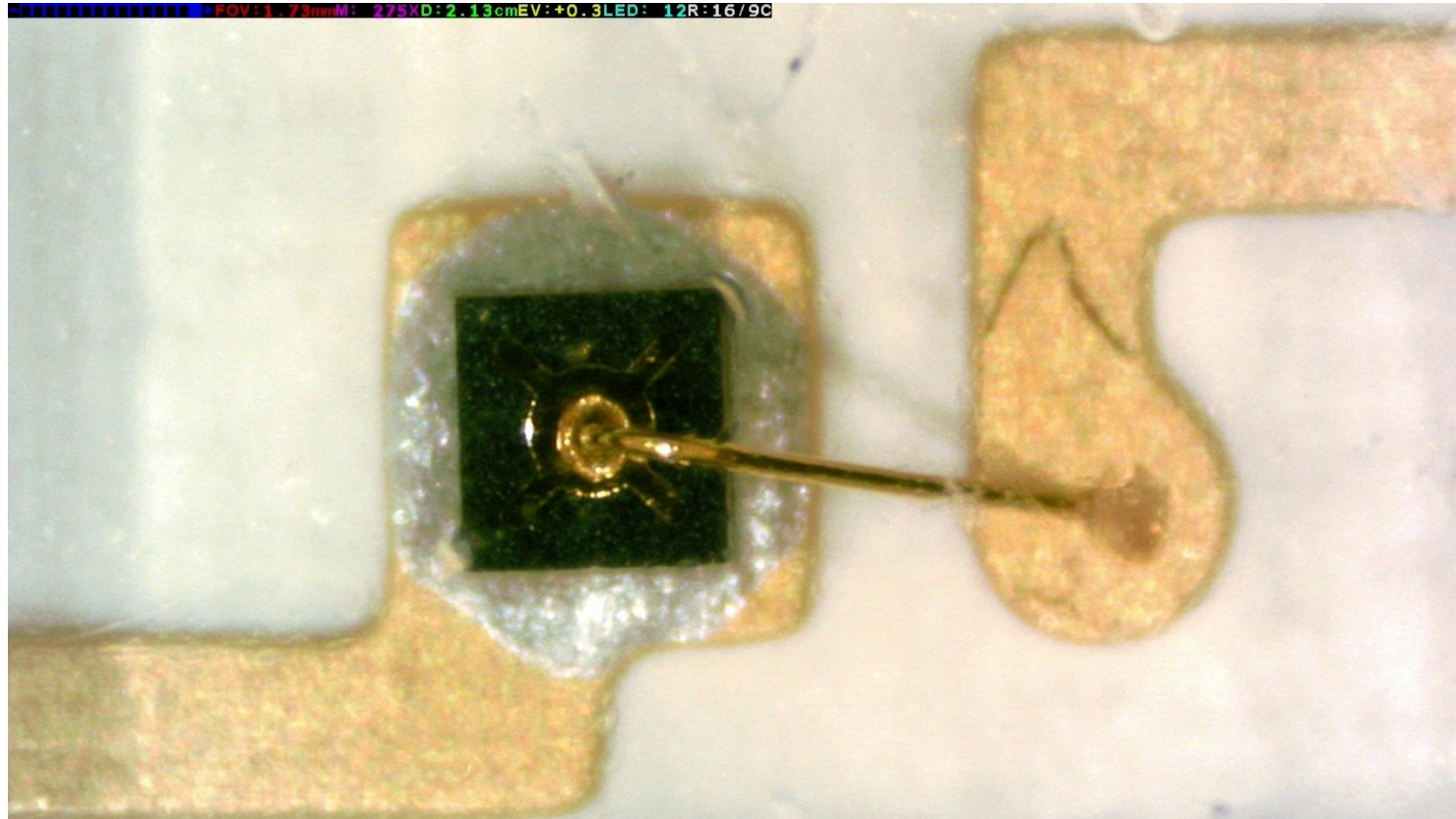
10X MAG : 207X



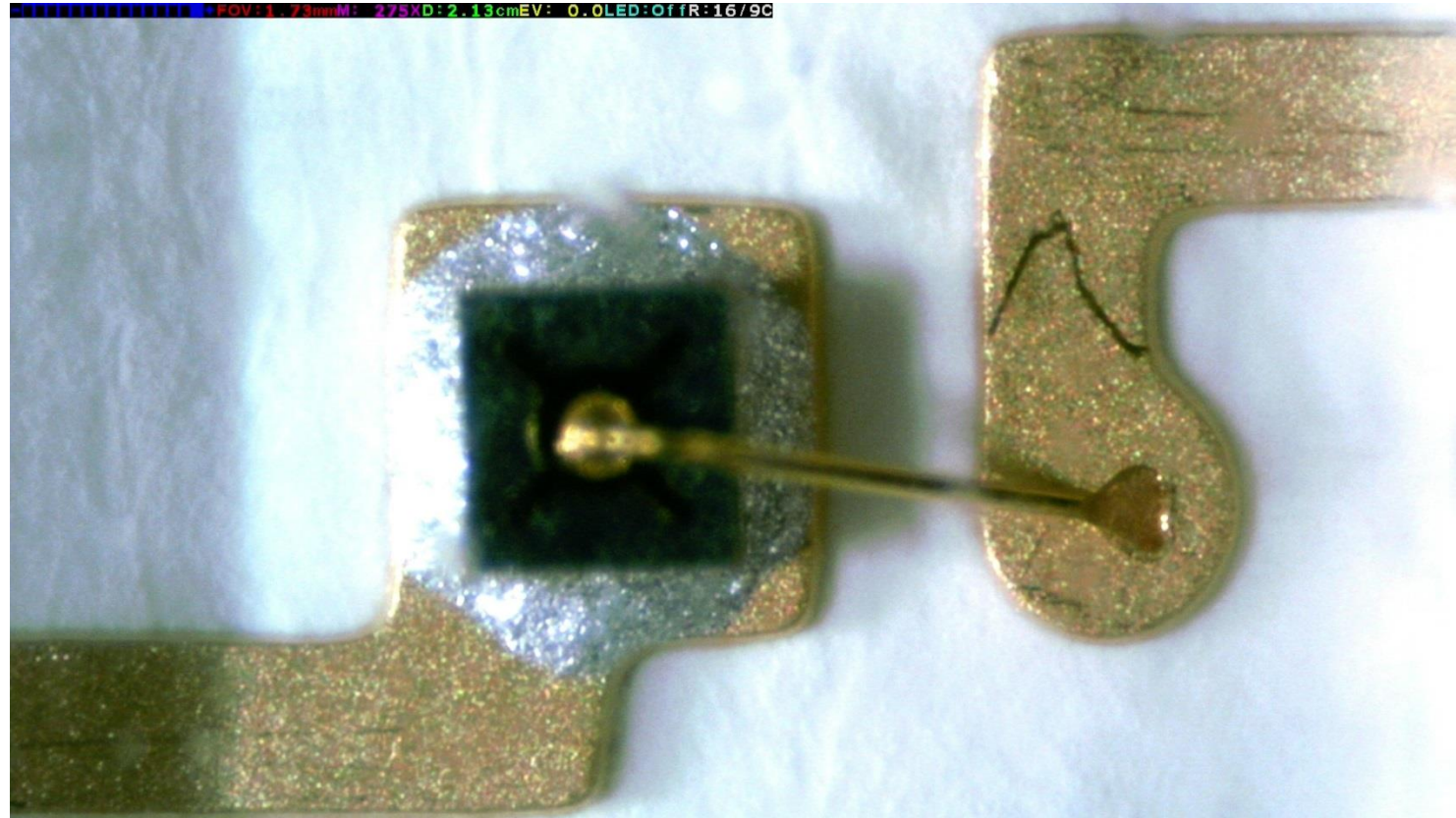
HDMI mode



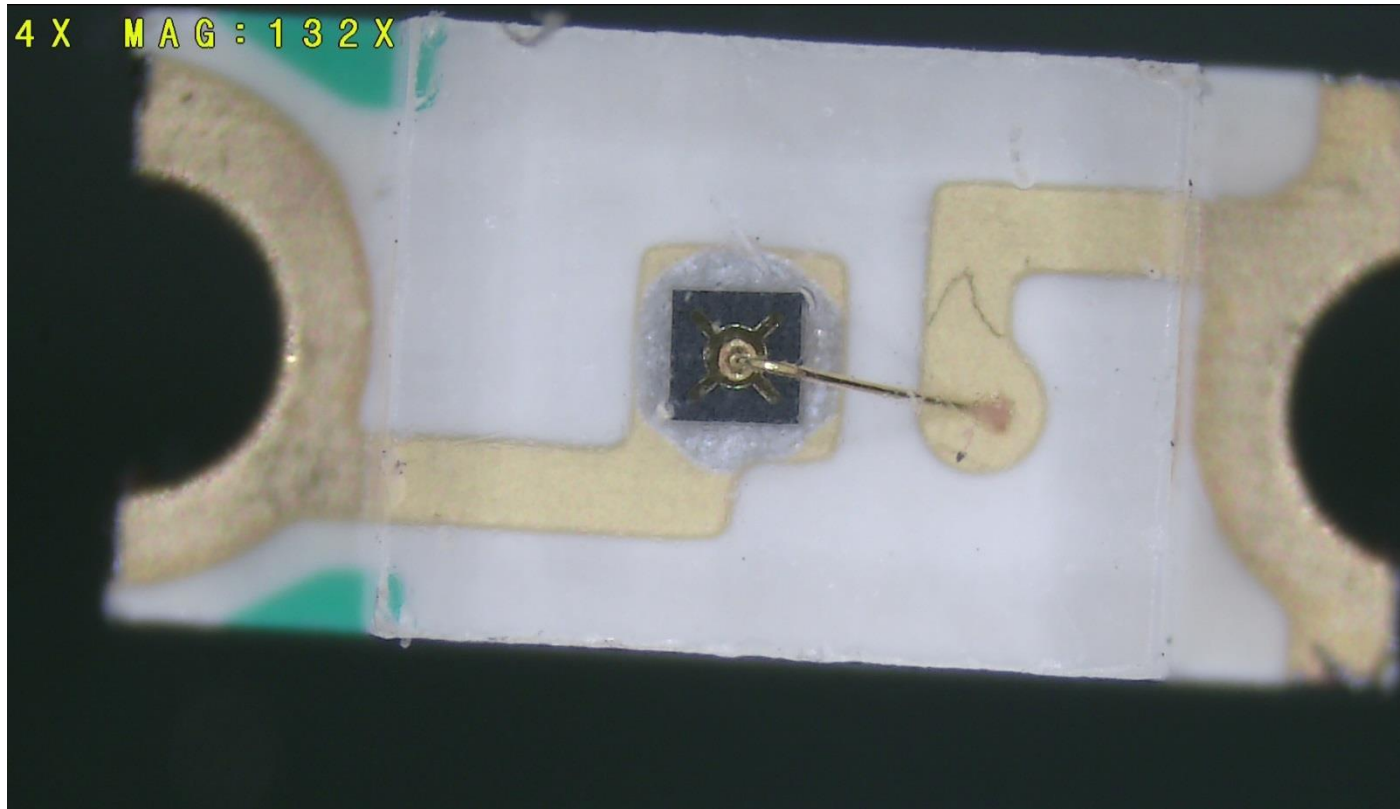
Application : Wire bonding □ UM06 + GN-01



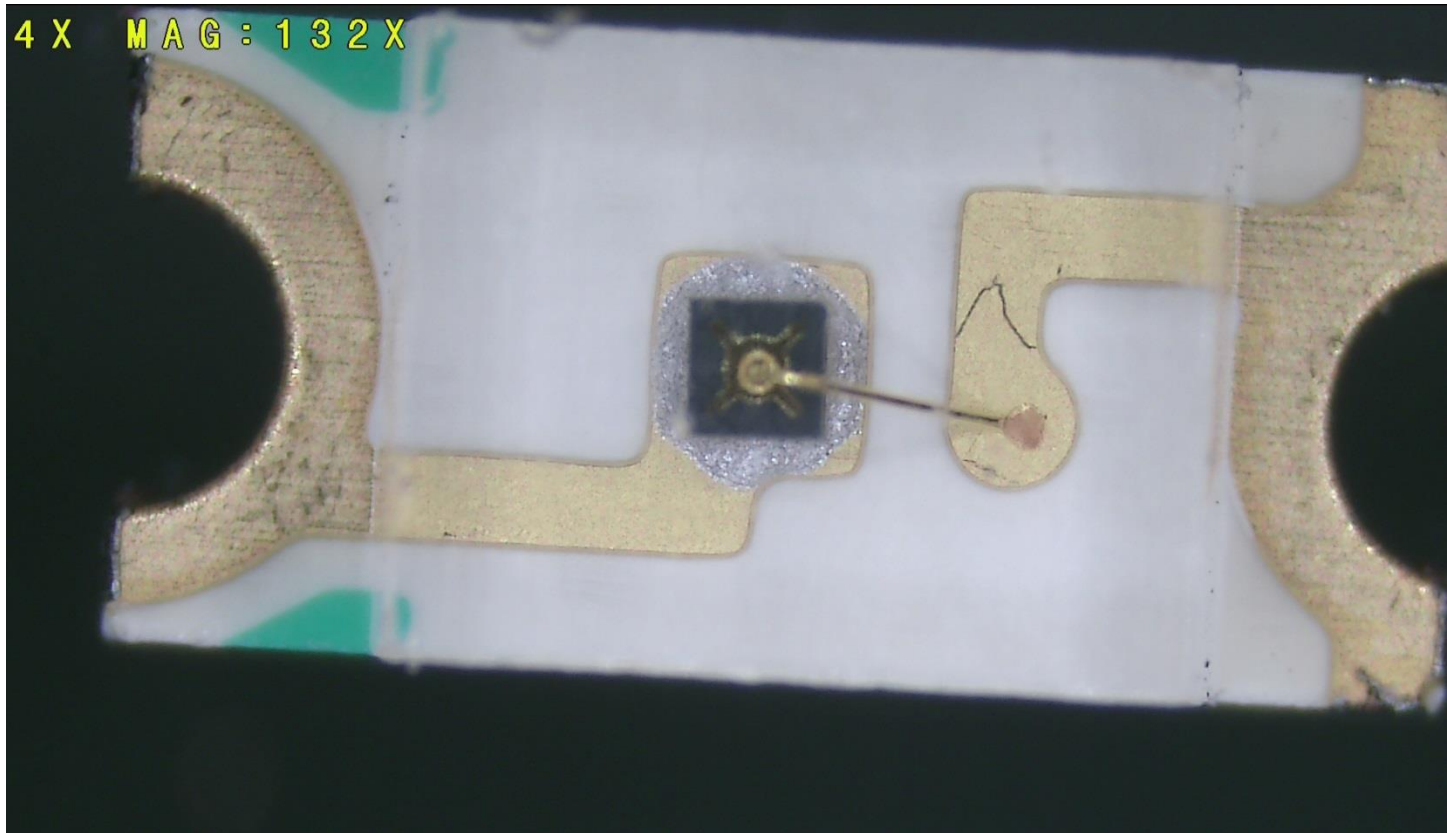
Application : Wire bonding □ UM06 + GN-01



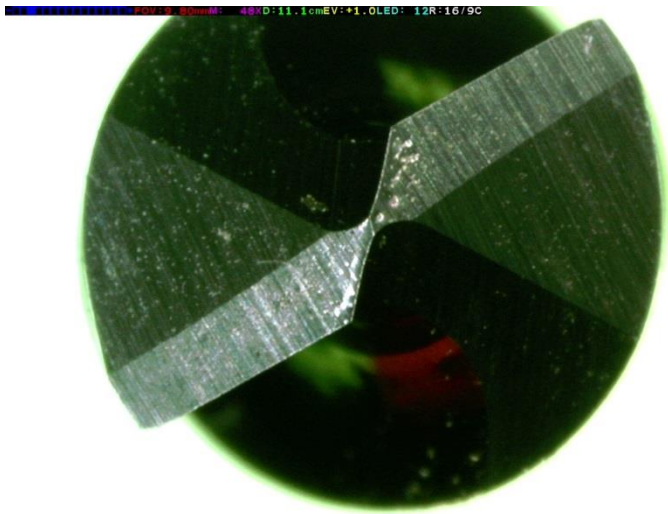
Application : Wire bonding ▣ UM08



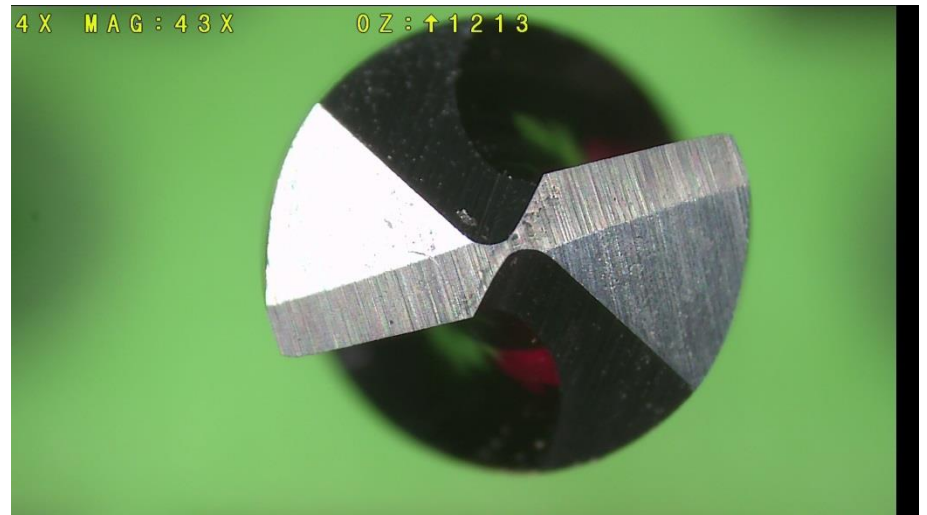
Application : Wire bonding ▣ UM08



Application : Drill

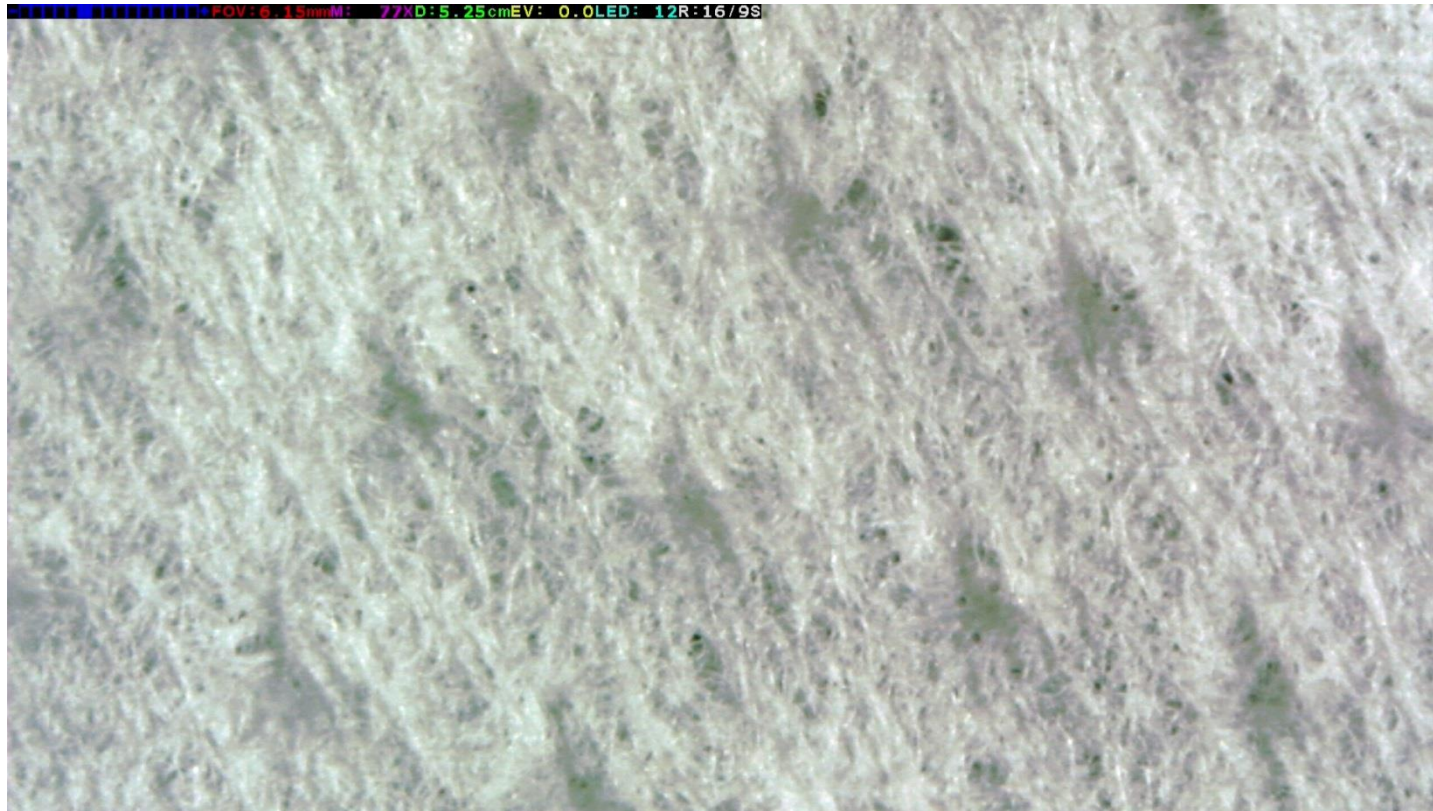


□ UM06 + GN-01



□ UM08

Application : Fiber □ UM06 + GN-01

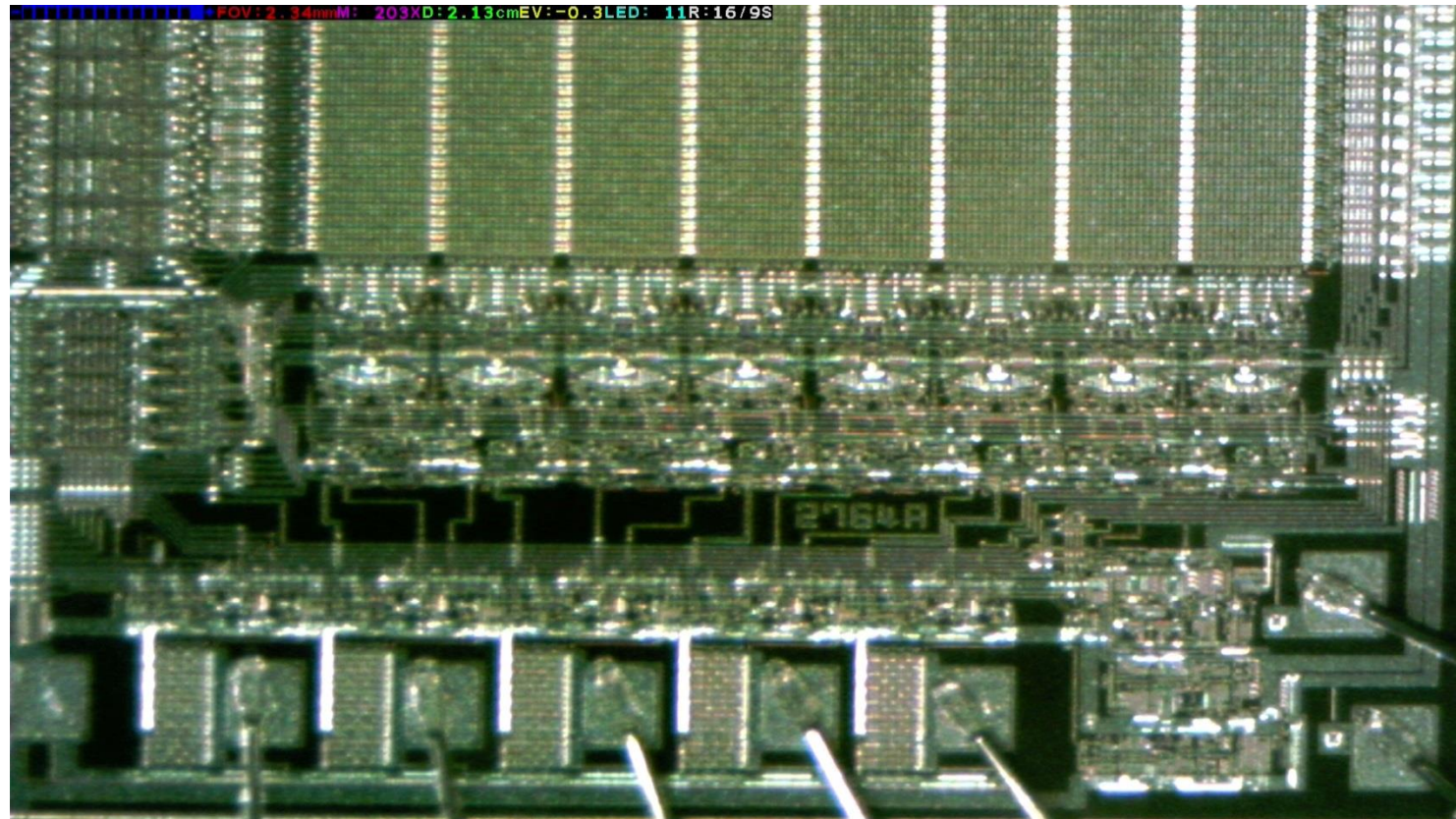


Application : Fiber

□ UM08



Application : Marks □ UM06 + GN-01



Application : Marks

□ UM08

